

....HYPOX partner institutions

Partner 5:

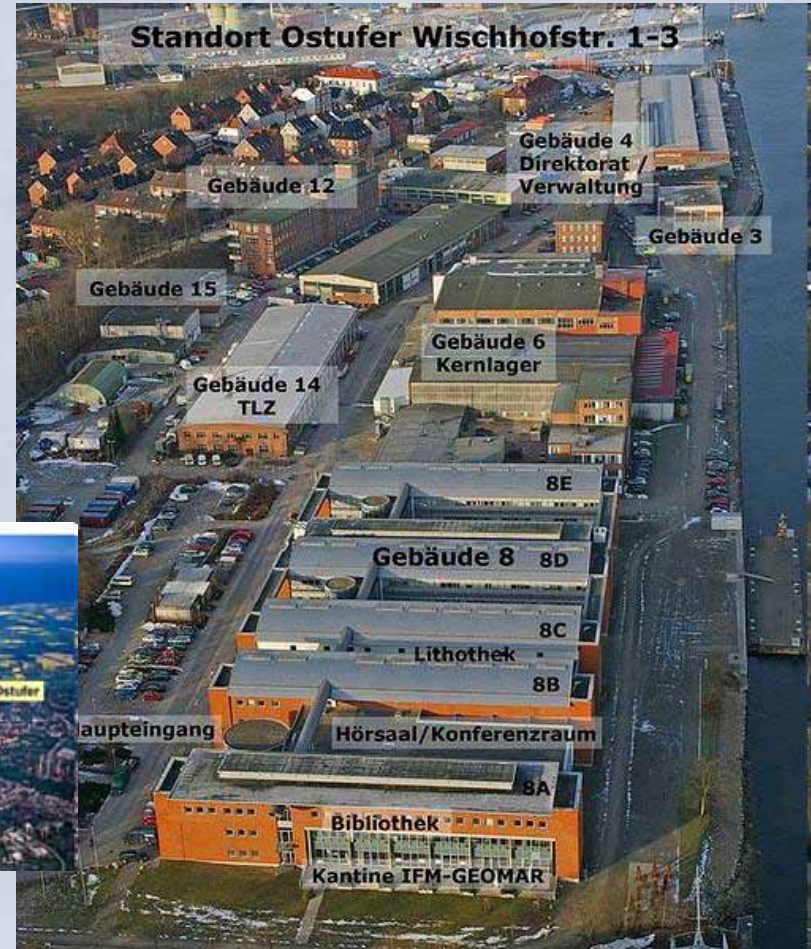
IFM-GEOMAR (Kiel, Germany)



....HYPOX partner institutions: IFM-GEOMAR

# Leibniz Institute of Marine Sciences

## IFM-GEOMAR, Kiel ([www.ifm-geomar.de](http://www.ifm-geomar.de))



....HYPOX partner institutions: IFM-GEOMAR

## IFM-GEOMAR „from the sea floor to the atmosphere“

530 employees, 330 scientists,  
research is structured in 4 areas:

- Ocean Circulation and Climate
- Marine Biogeochemistry, Marine Geosystems
- Marine Ecology
- Dynamics of the Ocean Floor

**Marine Geosystems:** Methods and tools  
in situ technology, biogeochemical modeling,  
geochemical analytical facilities, gas analysis

**HYPOX-related groups and role in HYPOX**

Lander and flux group, modeling group

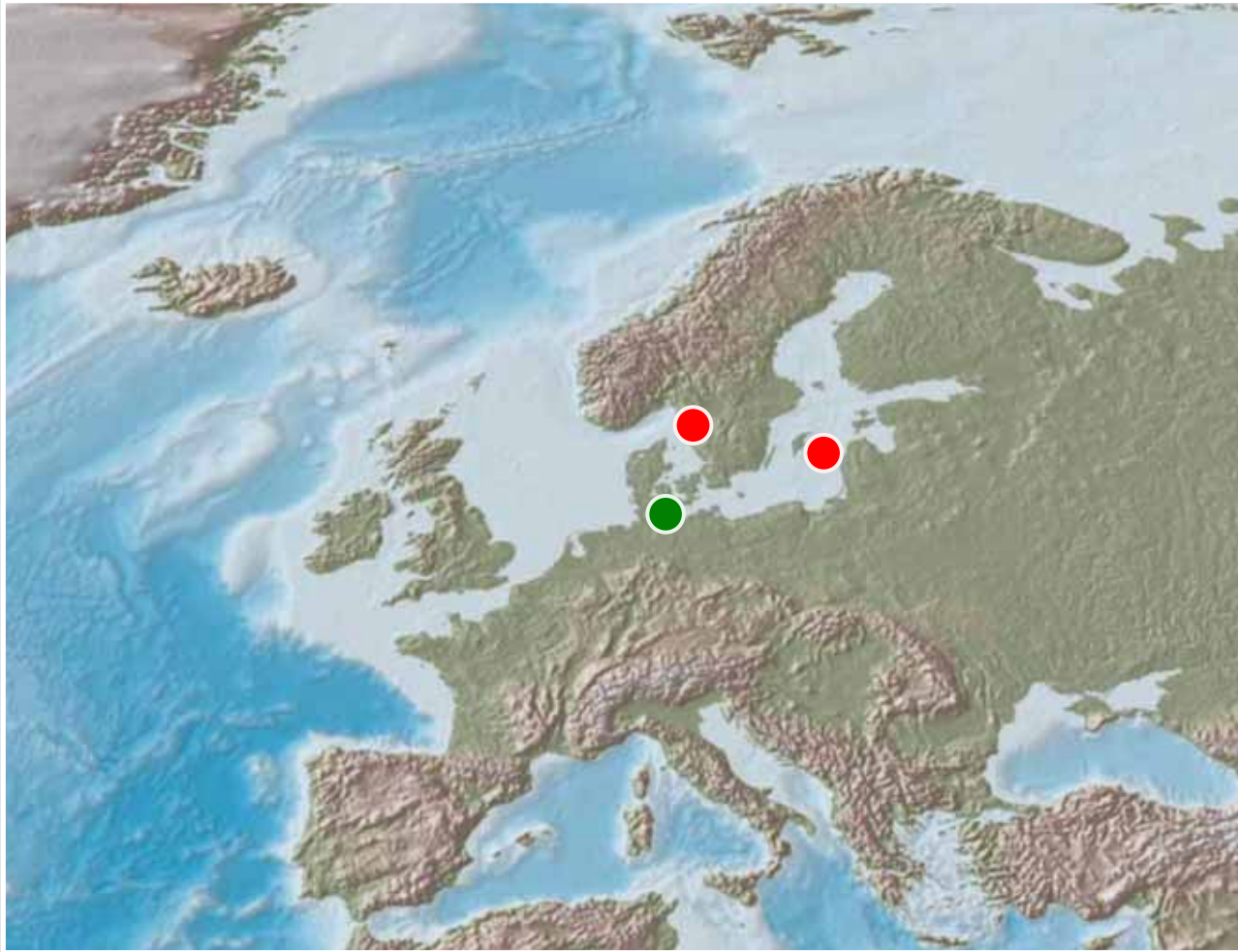
> field studies (Gotland Basin, Koljöfjord)

> cruise lead (2 x Gotland Basin)



....HYPOX partner institutions: IFM-GEOMAR

# Institute & main study sites location



IFM-GEOMAR

Gotland Basin

Koljöfjord

....HYPOX partner institutions: IFM-GEOMAR

## Tasks/Contributions:

In situ measurements (WP6/7), N-cycle in the benthic boundary layer (solute fluxes, response of meiobenthos to O<sub>2</sub> availability)

Predictive biogeochemical modeling (WP2)

Will lead two cruises to the Gotland Basin

## Infrastructure:

Lander technology, in situ experimental modules, transecting profiler, geochemical lab facilities, GC/MIMS for gas analyses, research vessels

