

....HYPOX partner institutions

Partner 6:

Ifremer (Plouzane, France)



# Institut français de recherche pour l'exploitation de la mer [www.ifremer.fr](http://www.ifremer.fr)



Created in 1984, Ifremer is a public institute of industrial and commercial nature. It is placed under the joint supervision of the ministries for Ecology, Energy, Sustainable Development and Town and Country Planning; for Higher Education and Research; for Agriculture and Fisheries.

....HYPOX partner institutions: Ifremer

Ifremer [www.ifremer.fr](http://www.ifremer.fr)



Photograph by Yann Lamour

....HYPOX partner institutions: Ifremer



## Ifremer Institute missions in brief

- Finalized research  
In the prospect of answering to social expectations (climate change effects, marine biodiversity, pollutions prevention, seafood quality...). The results are scientific knowledge and technological innovations, but also ocean observation and exploration systems.
- Oceans seas and coastal waters monitoring  
In support with public policy for the environment and its resources. In the form of notices or studies reports, the results provide the information about the environment state or the evaluation of a resource and permit the expertise on sea-related questions.





....HYPOX partner institutions: Ifremer

## Ifremer Institute missions in brief

- Development, management and open access of large research infrastructures

Fleet, calculation means, data centres, experimental facilities – which are made available to the whole National and European scientific community, as well as to private partners.



....HYPOX partner institutions: Ifremer

## Ifremer Institute in HYPOX <sup>ooo</sup>

- HYPOX-related groups and role in HYPOX

Ifremer will lead WP6 "Assessing in situ oxygen depletion in the open sea" in which it will contribute by its knowledge of the Black Sea sedimentary system from previous acquired data obtained from surveys carried out since 1997.

Ifremer will contribute to WP1 "Improving and integrating in situ observation capacities of oxygen depletion" by providing a sensor in the Black Sea area in order to perform benthic measurements with a sub sea observatory node (according to ESONET recommendations).

Ifremer will participate in water column monitoring of O<sub>2</sub> and associated parameters on a coastal (400m) near-eulerian profiler.



....HYPOX partner institutions: Ifremer

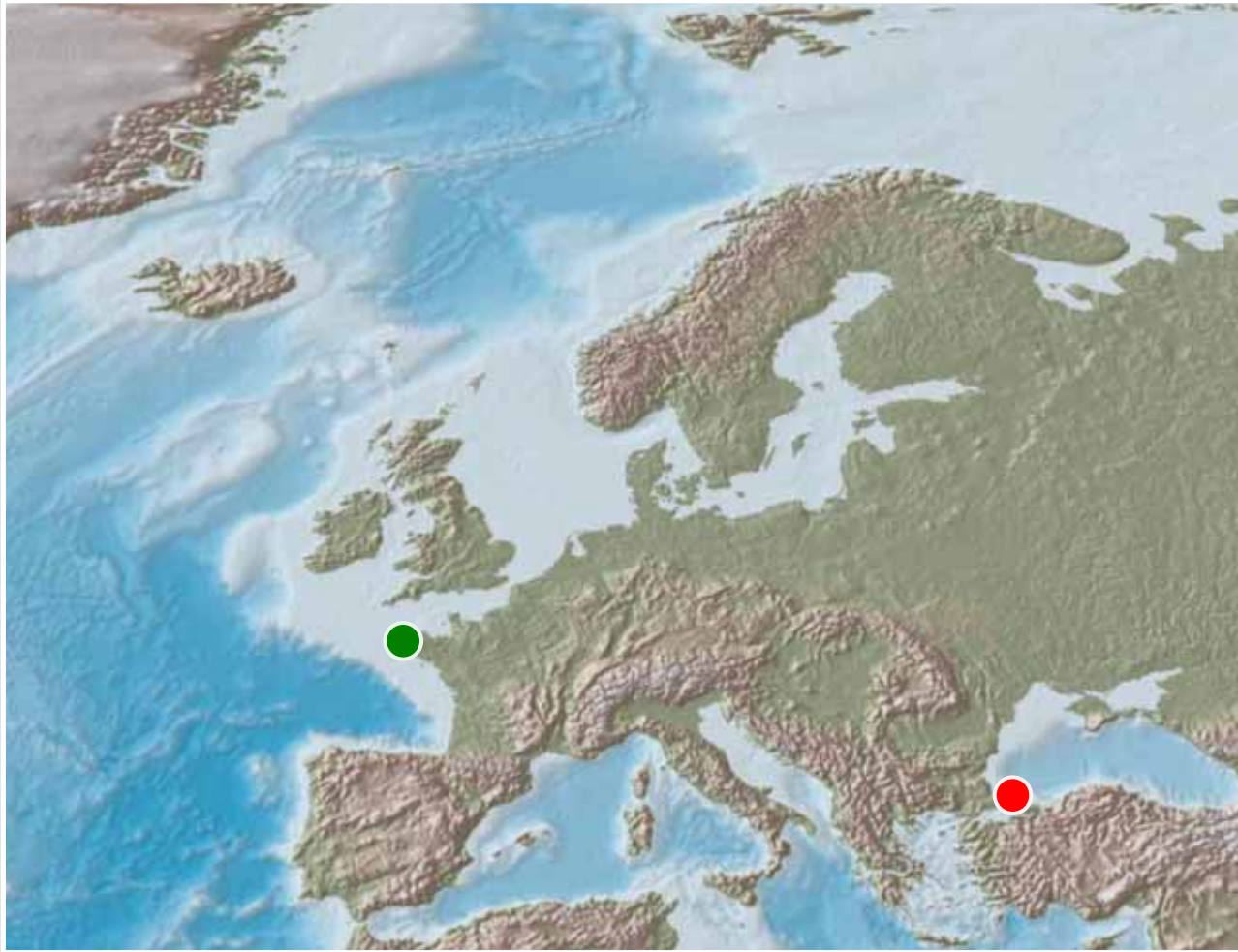
## Ifremer [www.ifremer.fr](http://www.ifremer.fr)

- **Short partner description:** Ifremer is a public institute of industrial and commercial nature with the mission to develop basic and applied research, expertise activities and industrial and technological development actions. Ifremer has developed an important network of European and International cooperation and takes an active part in European Union studies (the European Science Foundation's Marine Board, the DG Research and DG Fisheries programs, GEOSS). Ifremer is also a member of international organizations in its field of competence (General commission for Mediterranean fishing, intergovernmental ocean research commission, the OSPAR convention, International Council for the Exploration of the Sea). Ifremer has 1,385 employees distributed among 5 main centers and 26 smaller locations along the entire coastline of France. Ifremer manages 7 research vessels (4 of them blue-ocean), a manned submersible, a remotely-operated vehicle (ROV) for deep sea explorations, AUVS, gliders, floats and buoys and a full set of test facilities.
- **Role of Ifremer in HYPOX:** Ifremer will lead WP6 "Assessing in situ oxygen depletion in the open sea" in which it will contribute knowledge of the Black Sea sedimentary system that was acquired since 1997 in numerous surveys. Ifremer will contribute to WP1 "Improving and integrating in situ observation capacities of oxygen depletion" by providing a buoy in the Black Sea area in order to perform benthic measurements with a sub sea observatory node (according to ESONET recommendations). Ifremer will also participate in water column monitoring of O<sub>2</sub> and associated parameters on a coastal (400m) near-eulerian profiler,



....HYPOX partner institutions: Ifremer

# Institute & main study sites location



Ifremer

Black Sea:  
Bosporus