

....HYPOX partner institutions

Partner 2:

AWI (Bremerhaven, Germany)



....HYPOX partner institutions: AWI

Alfred Wegener Institute for Polar and Marine Research (www.awi.de)



- Foundation established in 1980;
- Includes the Alfred Wegener Institute in Bremerhaven, the Potsdam Research Unit, the Biologische Anstalt Helgoland and the Wadden Sea Station Sylt;
- Member of the Helmholtz Association of German Research Centres (HGF);
- 90% of financing by the German Federal Ministry of Education and Research, 8% by Bremen, and each time 1% by Brandenburg and Schleswig-Holstein;
- The foundation has > 800 employees and a total budget of ~130 million Euro in 2008.

....HYPOX partner institutions: AWI

The Alfred Wegener Institute in brief

- Approaches & concepts

The AWI conducts research in the Arctic, the Antarctic and at temperate latitudes. It coordinates Polar research in Germany and provides both the necessary equipment and the essential logistic back up for polar expeditions. Recent additional research themes include North Sea Research, contributions to Marine Biological Monitoring, Marine Pollution Research, Investigation of naturally occurring marine substances and technical marine developments.

- Mission statement

The Institute's research mission is to improve our understanding of ocean-ice-atmosphere interactions, the animal and plant kingdoms of the Arctic and Antarctic, and the evolution of the polar continents and seas. Given the major role played by these regions within the Earth's climate system, global change is a central focus of the research effort at AWI.

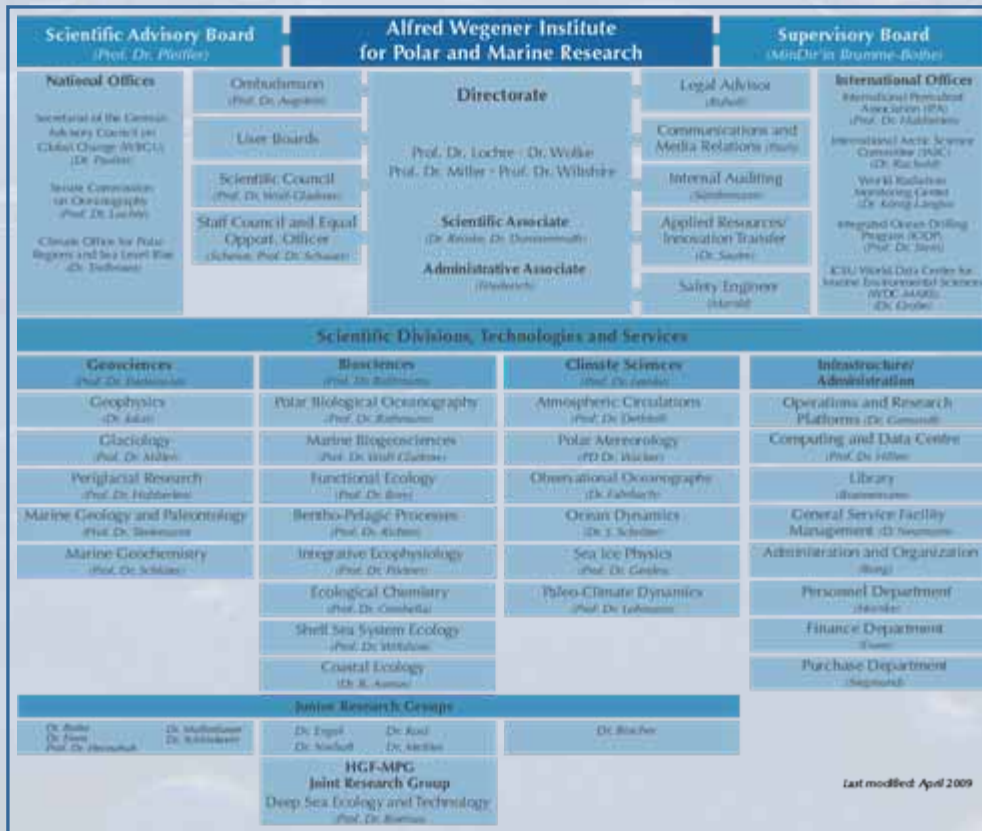
- HYPOX-related groups and role in HYPOX

Marine Geochemistry Group; HGF-MPI Group for Deep-Sea Ecology and Technology
> Field studies (Black Sea, Deep-sea long-term observatory HAUSGARTEN)
> WP3 lead (Existing and future impacts of hypoxia on ecosystems)



....HYPOX partner institutions: AWI

Scientific Program and Organigram



AWI is participating in the HGF research program PACES (Polar Regions and Coasts in a changing Earth System), which aims at identifying the role of processes at high latitudes on past, current and future changes of the Earth system.

Research will focus on

- the changing Arctic and Antarctic
- coasts affected and mediated by climatic and anthropogenic drivers
- lessons from the Earth's past, and
- a synthesis via the integration of the polar perspective into Earth System models.

PACES will provide insights on naturally driven Earth climate fluctuations and their anthropogenic perturbation and consequential effects and thus provides the basic scientific understanding for appropriate political decisions.



....HYPOX partner institutions: AWI

Additional info on infrastructure



- Polarstern represents the outstanding research tool of German polar research. Additional vessels are available.
- In the Arctic and Antarctic, research is conducted at research stations, some of which are manned year-round.
- Polar aircraft and underwater research facilities provide other large-scale infrastructure.
- Other infrastructure of the institute includes the libraries, various data bases and software solutions, acquired or often developed specifically for the institution.